

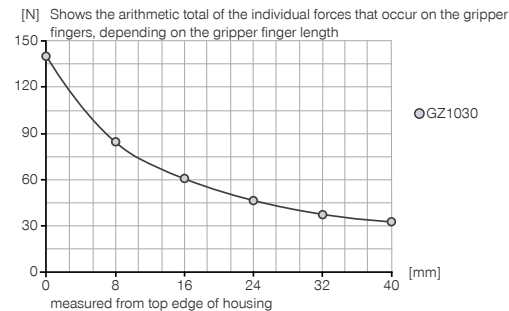
2-JAW ANGULAR GRIPPERS

INSTALLATION SIZE GZ1030

PRODUCT SPECIFICATIONS

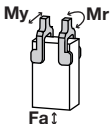


Gripping force diagram



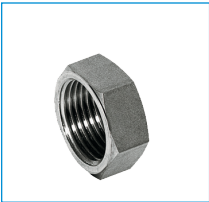
Forces and moments

Displays static forces and moments that can also have an effect, besides the gripping force.



Mr [Nm]	1.5
My [Nm]	1
Fa [N]	110

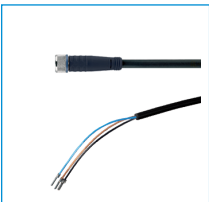
INCLUDED IN DELIVERY



Locking nut

C093614159

RECOMMENDED ACCESSORIES



Plug-in connector Straight Cable 5m - Socket M8 (female)
KAG500



Straight Fittings - Quick Connect Style
GVM5



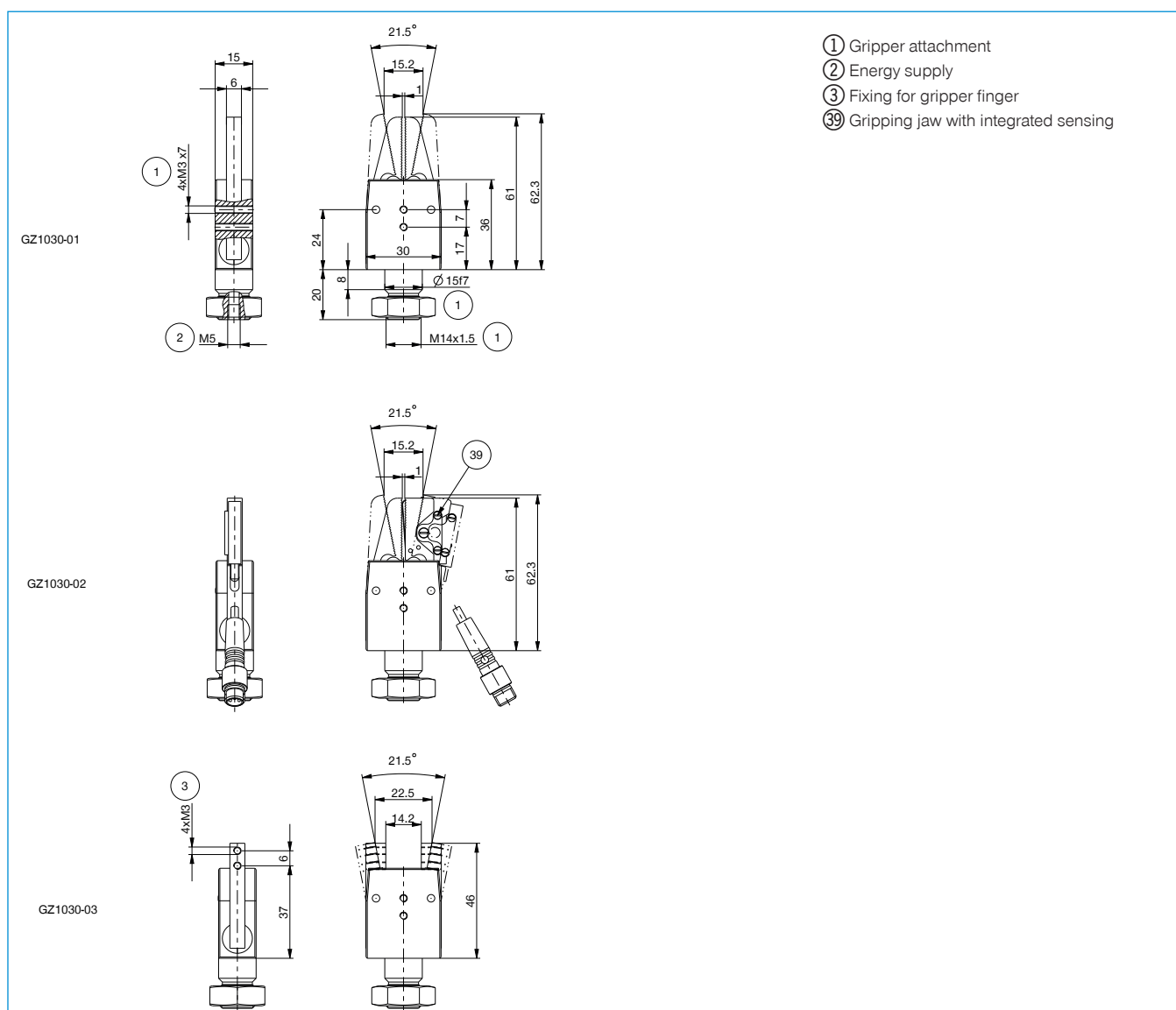
Plug-in connector customizable Straight - Connector M8
S8-G-3



Plug-in connector customizable Straight - Connector M12
S12-G-3

Order no.	Technical Data*		
	GZ1030-01	GZ1030-02	GZ1030-03
Stroke per jaw [°]	11	11	11
Gripping force in closing [N]	130	130	130
Closing moment [Nm]	1.6	1.6	1.6
Closing time [s]	0.02	0.02	0.02
Opening time [s]	0.03	0.03	0.03
Operating pressure min. [bar]	2	2	2
Operating pressure max. [bar]	6	6	6
Operating temperature min. [°C]	5	5	5
Operating temperature max. [°C]	+80	+80	+80
Air volume per cycle [cm ³]	0.9	0.9	0.9
Gripper finger with integrated sensor	No	Yes	No
Weight [kg]	0.05	0.063	0.046

*All data measured at 6 bar



2-JAW ANGULAR GRIPPERS

SERIES GZ1000

1

Series GZ1000 / 2-Jaw Angular Grippers / pneumatic / Grippers

► PRODUCT ADVANTAGES



“The top of the line”

► Unique quality meets functionality

This is one of the best angular grippers on the market, enabling you to make your application more cost-effective and functional

► Variable attachment

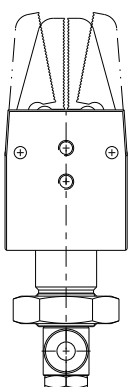
Decide for yourself whether you want use screws, lock-nuts or a toolkit clamping system for fastening

► Sensing with process reliability

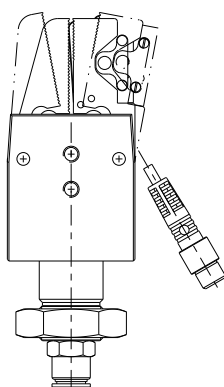
Unlike many other established products on the market, you can even differentiate between “Component present” and “Component not present”

► VERSIONS

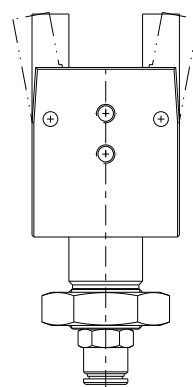
-01



-02



-03



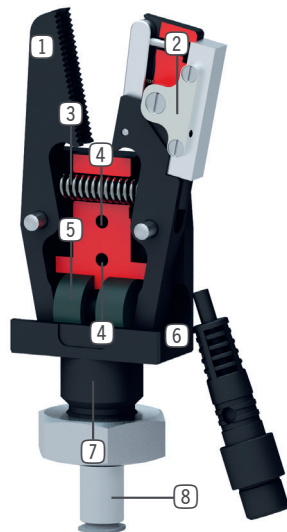
HOW TO ORDER CORRECTLY

- The product order numbers are arranged according to this diagram:

Order no.	GZ1030	<input type="checkbox"/>		
Saw tooth jaw without query	-01			
Saw tooth jaw with query	-02			
Version for attaching customer-specific gripper fingers	-03			



► BENEFITS IN DETAIL



- ① **Gripper jaw**
 - available in different versions
- ② **Position sensing**
 - via inductive proximity switch
- ③ **Return spring**
 - to open the gripper jaws
- ④ **Mounting and positioning**
 - via thread / through-hole
- ⑤ **Drive**
 - single-acting pneumatic cylinder
- ⑥ **Housing**
 - hard coated surface for increased durability
- ⑦ **Mounting and positioning**
 - via fit, thread and lock nut
- ⑧ **Energy supply**

► SERIES CHARACTERISTICS



Number of installation sizes	3
Stroke per jaw	8° - 10°
Gripping force	62 N - 315 N
Weight	0,015 kg - 0,125 kg
AP class	1



2 million maintenance-free cycles (max.)



Inductive sensor



IP30