

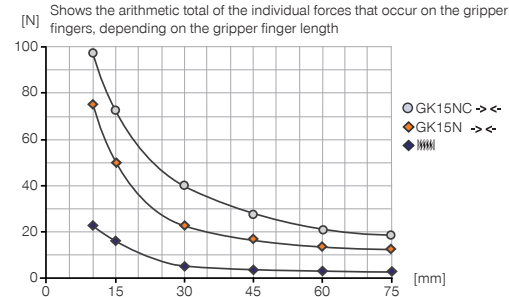
2-JAW RADIAL GRIPPER

INSTALLATION SIZE GK15

PRODUCT SPECIFICATIONS

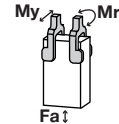


Gripping force diagram



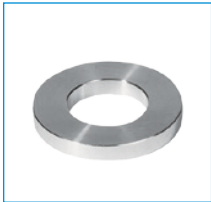
Forces and moments

Displays static forces and moments that can also have an effect, besides the gripping force.



Mr [Nm]	0.4
My [Nm]	0.4
Fa [N]	75

RECOMMENDED ACCESSORIES



Centering Disc

ZE12H7X4



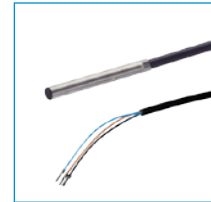
Mounting block

KB3



Buffer stop

PB15N



Inductive proximity switch
- Cable 5 m

NJ3-E2



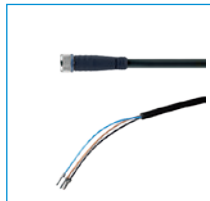
Inductive Proximity
Switch Cable 0,3 m -
Connector M8
NJ3-E2SK



Magnetic field sensor
Angled Cable 5 m
MFS103KHC



Magnetic field sensor Angled
Cable 0,3 m - Connector M8
MFS103SKHC



Plug-in connector Straight Ca-
ble 5m - Socket M8 (female)
KAG500



Plug-in connector Angled Ca-
ble 5m - Socket M8 (female)
KAW500



Straight Fittings - Quick
Connect Style
GVM5

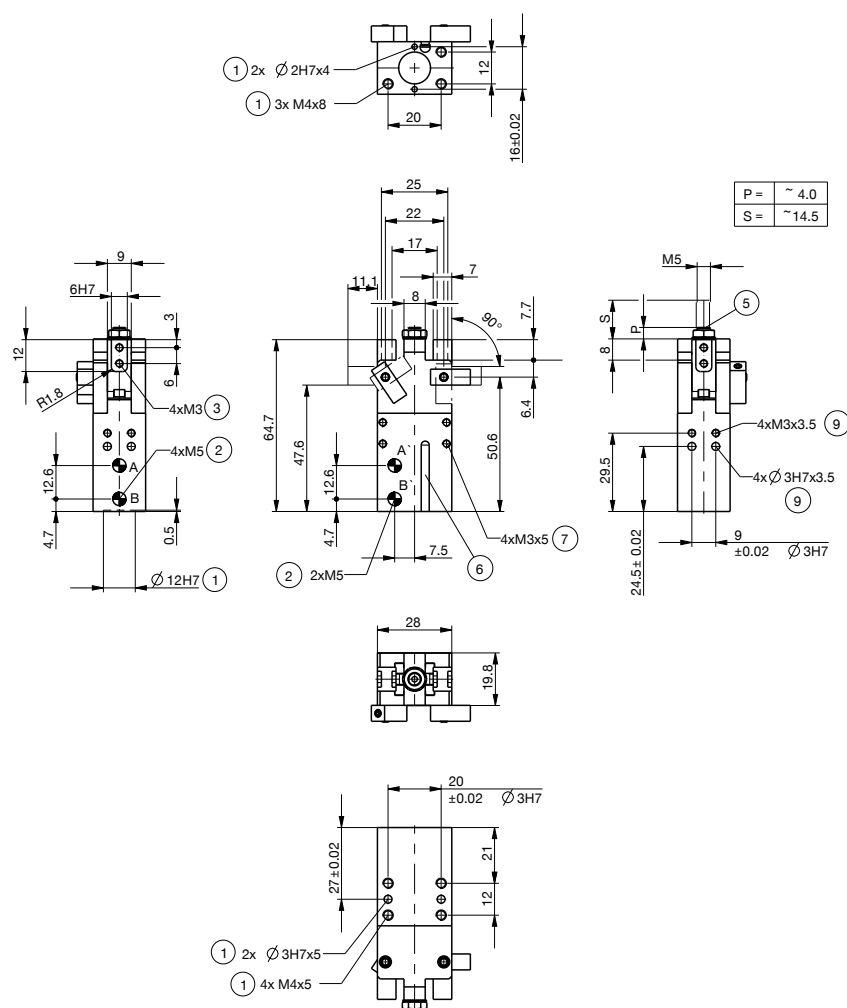
► Technical Data*

Order no.	GK15N-B	GK15NC-B
Stroke per jaw [°]	90	90
Gripping moment in closing [Nm]	1.2	1.6
Gripping moment secured by spring min. [Nm]		0.4
Gripping force in closing [N] **	70	100
Closing time [s]	0.1	0.2
Opening time [s]	0.1	0.2
Repetition accuracy +/- [mm]	0.06	0.06
Operating pressure min. [bar]	3	5
Operating pressure max. [bar]	8	8
Operating temperature min. [°C]	5	5
Operating temperature max. [°C]	+80	+80
Air volume per cycle [cm ³]	2	2.4
Weight [kg]	0.1	0.12

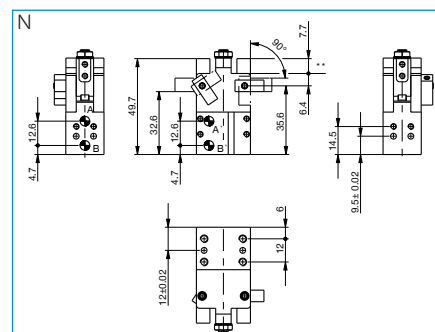
*All data measured at 6 bar

**Measured from top edge of housing

NC



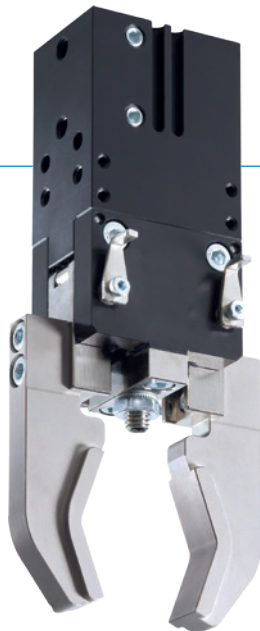
- ① Gripper attachment
- ② Energy supply
- ③ Fixing for gripper finger
- ⑤ Stroke adjustment screw
- ⑥ Integrated slot for magnetic field sensor
- ⑦ Fixing for mounting block
- ⑨ Buffer stop mounting
- (A) Air connection (close)
- (B) Air connection (open)
- (A) Air connection, alternative (close)
- (B) Air connection, alternative (open)



2-JAW RADIAL GRIPPER

SERIES GK

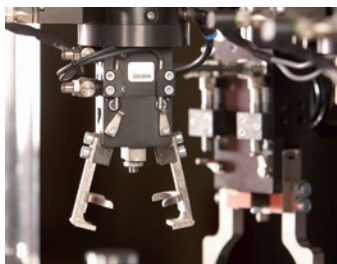
▶ PRODUCT ADVANTAGES



“The compact”

- ▶ **Proven technology**
We have more than 20 years of proven reliability, which ensures uninterrupted production for you
- ▶ **Best force/installation space ratio**
Force transmission using the toggle lever enables high gripping force while optimally utilizing the installation space
- ▶ **Smooth stroke configuration**
You can adjust the 180° opening angle to be unique to your application using an adjusting screw

▶ THE BEST PRODUCT FOR YOUR APPLICATION



- ▶ **Our products welcome the challenge!**
Extreme conditions, all over the world—our tried and tested components and systems give you endless possibilities.
Find the best product for your specific use:
www.zimmer-group.de

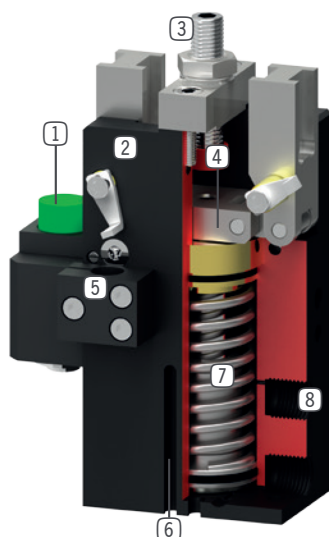
HOW TO ORDER CORRECTLY

- ▶ The product order numbers are arranged according to this diagram:

Order no.	GK15N	<input type="checkbox"/>	-B	
External gripping, self locking mechanism at 0° opening angle and spring closing			C	



► BENEFITS IN DETAIL



- ① **Buffer stop**
 - absorption of kinetic energy for heavy and long gripper fingers
- ② **Robust, lightweight housing**
 - Hard-coated aluminum alloy
- ③ **Stroke adjustment screw**
 - Infinitely adjustable opening stroke
- ④ **Guided toggle lever mechanism**
 - synchronized the movement of the gripper jaws
 - mechanically self-locking
- ⑤ **Mounting block**
 - mounting for inductive proximity switch
- ⑥ **Sensing slot**
 - mounting and positioning of magnetic field sensors
- ⑦ **Integrated gripping force safety device**
 - spring integrated into cylinder as energy storage
- ⑧ **Energy supply**
 - possible from several sides

► SERIES CHARACTERISTICS



Number of installation sizes	6
Stroke per jaw	0° - 90°
Gripping force	70 N - 4250 N
Weight	0,1 kg - 4,1 kg
AP class	2



10 million maintenance-free cycles (max.)



IP20



Spring closing C



Magnetic field sensor



Inductive sensor