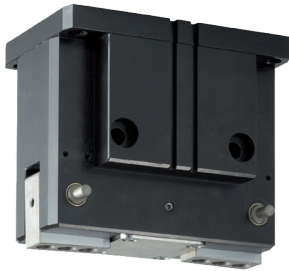


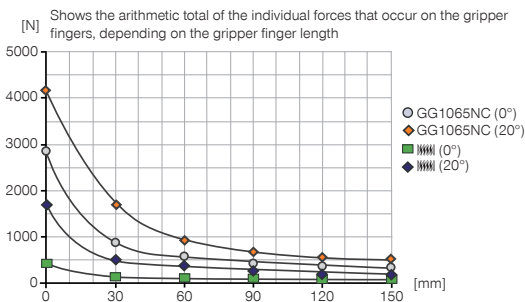
# 2-JAW ANGULAR GRIPPERS

## INSTALLATION SIZE GG1065

### PRODUCT SPECIFICATIONS

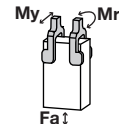


#### Gripping force diagram



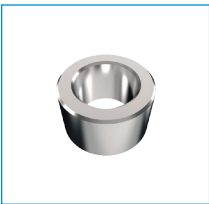
#### Forces and moments

Displays static forces and moments that can also have an effect, besides the gripping force.



Mr [Nm]	20
My [Nm]	20
Fa [N]	330

### INCLUDED IN DELIVERY



Centering Disc

DST40800

### RECOMMENDED ACCESSORIES



Stroke adjustment screw

HES0009



Mounting block

KB8-43



Alternate proximity bracket

KHA1065-8



Inductive proximity switch - Connector M8

NJ8-E2S



Magnetic field sensor Angled Cable 0,3 m - Connector M8

MFS103SKHC



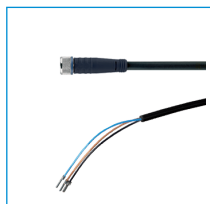
Magnetic field sensor Straight Cable 0,3 m - Connector M8

MFS204SKHC



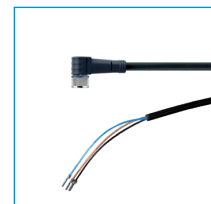
2-Position-Sensor Cable 0,3 m - Connector M8

MFSP2SKHC-02



Plug-in connector Straight Cable 5m - Socket M8 (female)

KAG500



Plug-in connector Angled Cable 5m - Socket M8 (female)

KAW500



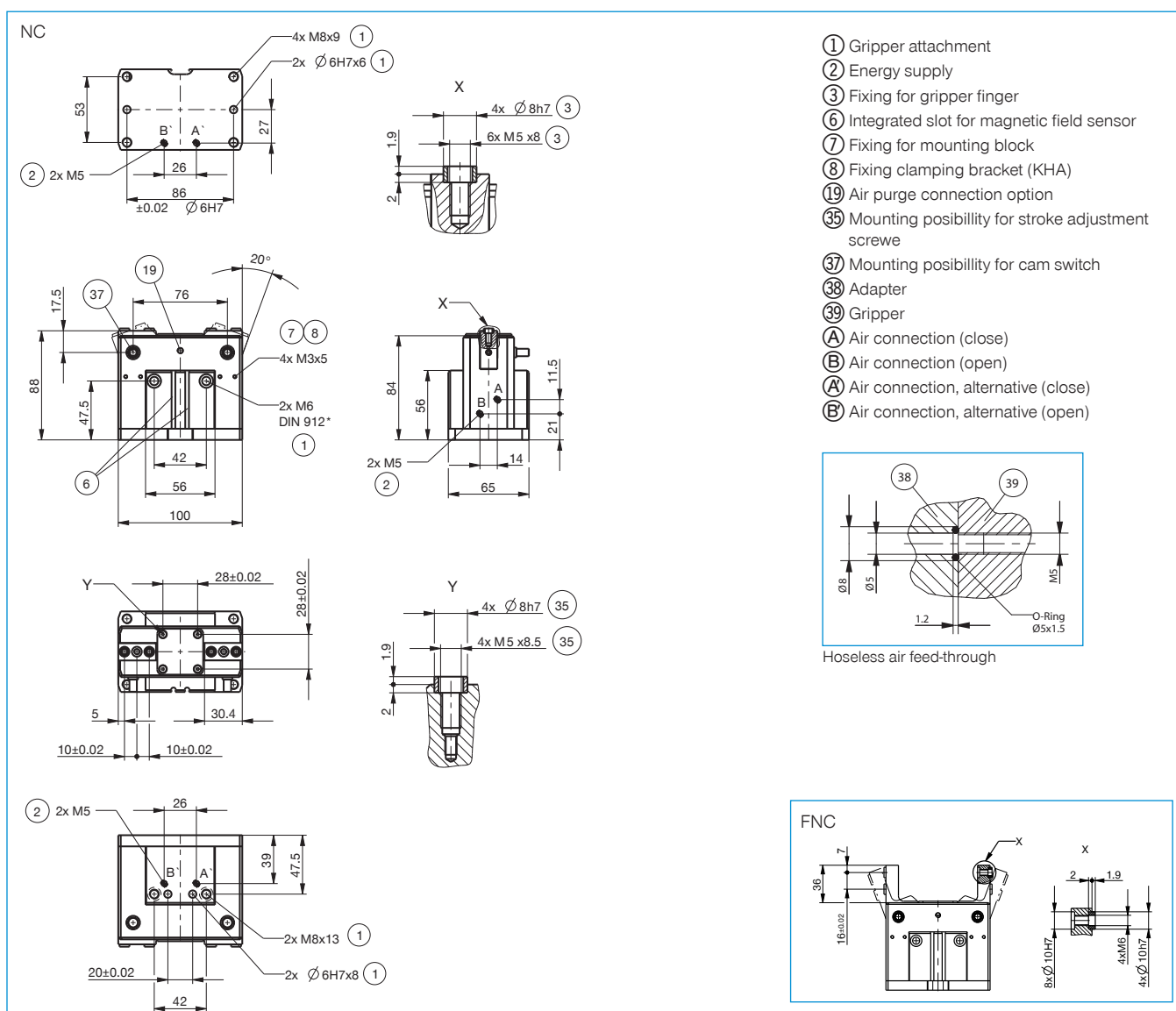
Straight Fittings - Quick Connect Style

GVM5

Order no.	► Technical Data*	
	GG1065NC	GG1065FNC
Stroke per jaw [°]	20	20
Gripping moment in closing max. [Nm]	39	39
Gripping moment secured by spring min. [Nm]	6.5	6.5
Gripping force in closing max. (at 0°) [N]**	2910	2910
Gripping force in closing max. (at 20°) [N]**	4160	4160
Gripping force secured by spring (at 0°) [N]	490	490
Gripping force secured by spring (at 20°) [N]	1745	1745
Closing time [s]	0.04	0.04
Opening time [s]	0.07	0.07
Repetition accuracy +/- [mm]	0.05	0.05
Operating pressure min. [bar]	4	4
Operating pressure max. [bar]	8	8
Operating temperature min. [°C]	5	5
Operating temperature max. [°C]	+80	+80
Air volume per cycle [cm³]	68	68
Weight [kg]	1.3	1.4

\*All data measured at 6 bar

\*\* Measured from top edge of jaws



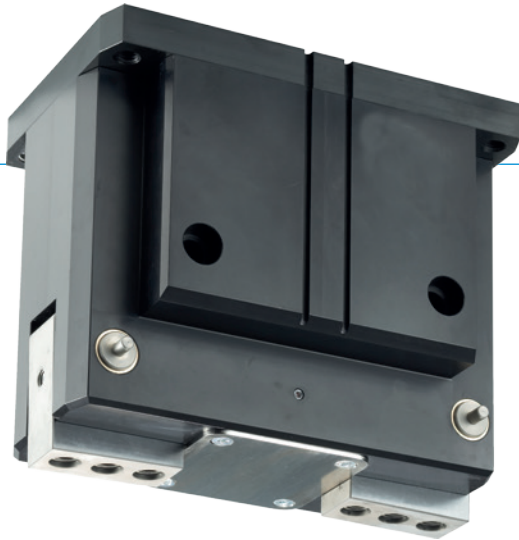
# 2-JAW ANGULAR GRIPPERS

## SERIES GG1000

1

Series GG1000 / 2-Jaw Angular Grippers / pneumatic / Grippers

### ▶ PRODUCT ADVANTAGES



#### “The strong”

##### ▶ High gripping force

Using the high gripping force, you can safely handle even the heaviest workpieces

##### ▶ High moment load

The generously scaled angular gear box provides the highest possible durability for your application

##### ▶ Failure-free continuous operation

Our uncompromising „Made in Germany“ quality guarantees up to 10 million maintenance-free cycles

### ▶ THE BEST PRODUCT FOR YOUR APPLICATION



##### ▶ Our products welcome the challenge!

Extreme conditions, all over the world—our tried and tested components and systems give you endless possibilities.

Find the best product for your specific use:

[www.zimmer-group.de](http://www.zimmer-group.de)

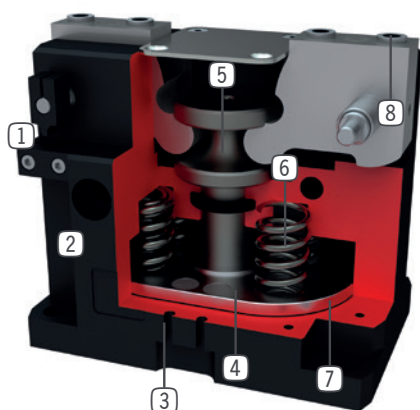
#### HOW TO ORDER CORRECTLY

- ▶ The product order numbers are arranged according to this diagram:

Order no.	GG1065	<input type="checkbox"/>	NC	
Gripper jaws with mounting possibility on the side		F		

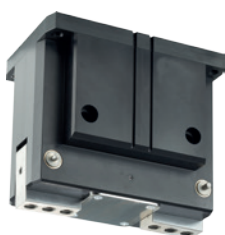


## ► BENEFITS IN DETAIL



- ① **Cam-switch and mounting block**  
- for position sensing
- ② **Robust, lightweight housing**  
- Hard-coated aluminum alloy
- ③ **Sensing slot**  
- groove for positioning of the magnetic field sensor
- ④ **Permanent magnet**  
- sensing of the piston setting position via magnetic field sensors
- ⑤ **Positively driven lever mechanism**  
- synchronized the movement of the gripper jaws
- ⑥ **Integrated gripping force safety device**  
- spring integrated into cylinder as energy storage
- ⑦ **Drive**  
- double-acting pneumatic cylinder
- ⑧ **Removable centering sleeves**  
- quick and economical positioning of the gripper fingers

## ► SERIES CHARACTERISTICS



Number of installation sizes	4
Stroke per jaw	20°
Gripping force	2910 N - 29110 N
Weight	1,3 kg - 13 kg
AP class	3



10 million maintenance-free cycles (max.)



IP40



Spring closing C



Magnetic field sensor



Inductive sensor



Purged air