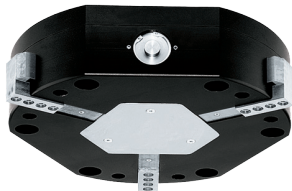
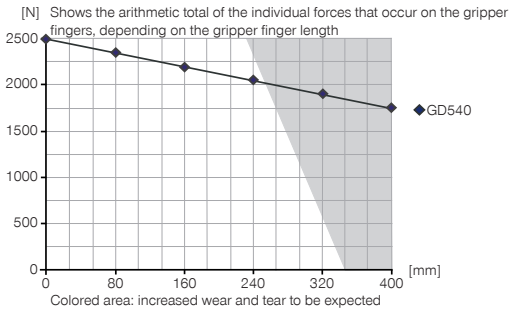


3-JAW CONCENTRIC GRIPPERS WITH LONG STROKE INSTALLATION SIZE GD540

PRODUCT SPECIFICATIONS

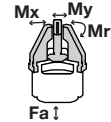


Gripping force diagram



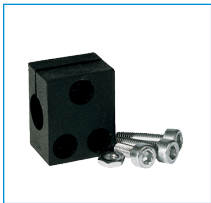
Forces and moments

Displays static forces and moments that can also have an effect, besides the gripping force.



Mr [Nm]	300
Mx [Nm]	200
My [Nm]	300
Fa [N]	8000

INCLUDED IN DELIVERY



Mounting block

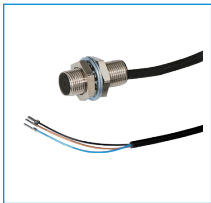
KB8K



Centering Disc

DST42000

RECOMMENDED ACCESSORIES



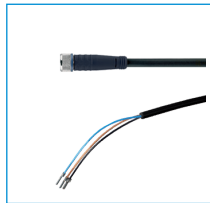
Inductive proximity switch
- Cable 5 m

NJ8-E2



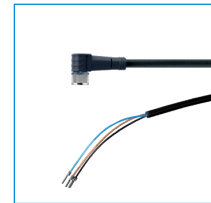
Inductive proximity switch
- Connector M8

NJ8-E2S



Plug-in connector Straight
Cable 5m - Socket M8
(female)

KAG500



Plug-in connector Angled
Cable 5m - Socket M8
(female)

KAW500



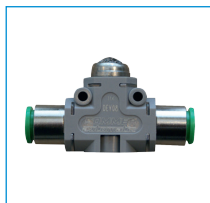
Straight Fittings - Quick
Connect Style

GV1-4X8



Angled Fittings - Quick
Connect Style

WV1-4X8



Quick Exhaust Valve

DEV08



Pressure Safety Valve

DSV1-8



Plug-in connector customiz-
able Straight - Connector M8

S8-G-3

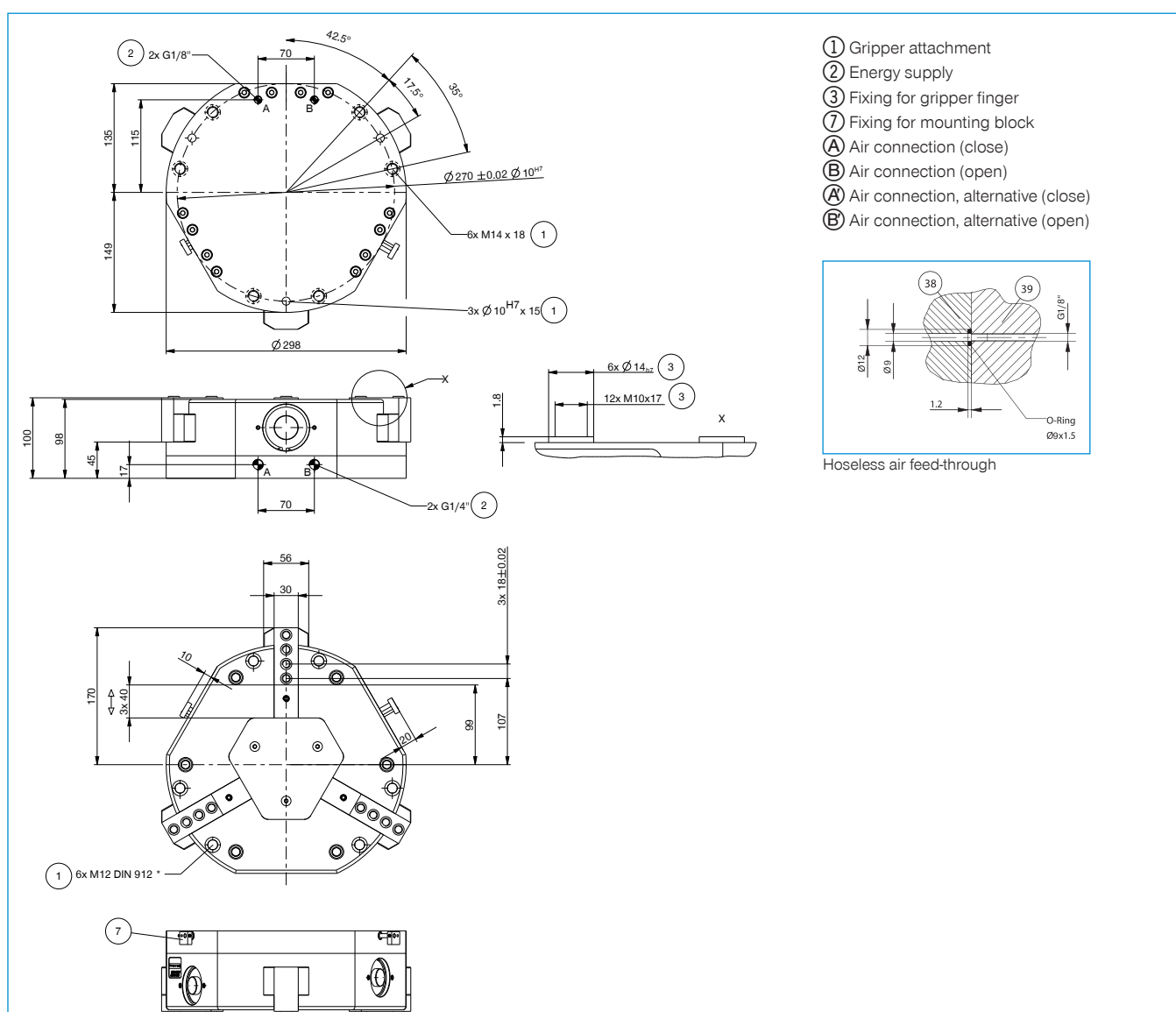


Plug-in connector customiz-
able Straight - Connector M12

S12-G-3

Order no.	GD540
Stroke per jaw [mm]	40
Gripping force in closing [N]	2480
Gripping force in opening [N]	2480
Closing time [s]	0.35
Opening time [s]	0.35
Repetition accuracy +/- [mm]	0.05
Operating pressure min. [bar]	3
Operating pressure max. [bar]	8
Operating temperature min. [°C]	5
Operating temperature max. [°C]	+80
Air volume per cycle [cm³]	440
Weight [kg]	19

* All data measured at 6 bar



3-JAW CONCENTRIC GRIPPERS WITH LONG STROKE SERIES GD500

1

▶ PRODUCT ADVANTAGES



“The flat”

- ▶ **Reduced installation height due to horizontal drive**
Reduces the interference contours for your application
- ▶ **Proven T slot guide**
This established and proven guiding technology stands for the highest process reliability like no other
- ▶ **Failure-free continuous operation**
Our uncompromising „Made in Germany“ quality guarantees up to 10 million maintenance-free cycles

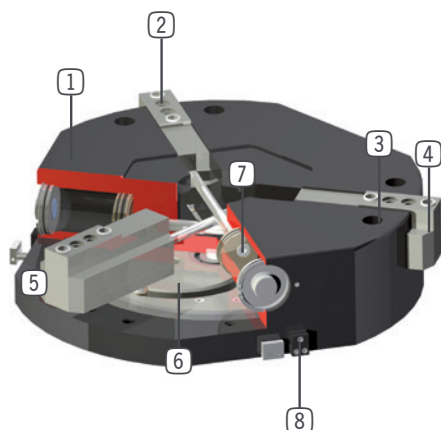
▶ THE BEST PRODUCT FOR YOUR APPLICATION



- ▶ **Our products welcome the challenge!**
Extreme conditions, all over the world—our tried and tested components and systems give you endless possibilities.
Find the best product for your specific use:
www.zimmer-group.de



► BENEFITS IN DETAIL



- ① **Robust, lightweight housing**
- Hard-coated aluminum alloy
- ② **Removable centering sleeves**
- quick and economical positioning of the gripper fingers
- ③ **Mounting and positioning**
- ④ **Gripper jaw**
- ground, hardened steel
- individual gripper finger mounting
- ⑤ **Precise T-Slot guide**
- high forces and moments capacity
- ⑥ **Cam**
- synchronized jaw movement
- ⑦ **Drive**
- three double-acting pneumatic cylinders
- ⑧ **Mounting block**
- mounting for inductive proximity switch

► SERIES CHARACTERISTICS



Number of installation sizes	3
Stroke per jaw	30 mm - 60 mm
Gripping force	1300 N - 2480 N
Weight	7,4 kg - 29 kg
AP class	3



10 million maintenance-free cycles (max.)



Inductive sensor



IP40