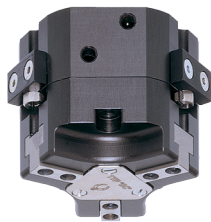


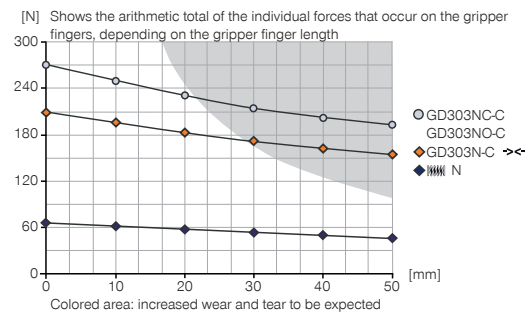
# 3-JAW CONCENTRIC GRIPPERS

## INSTALLATION SIZE GD303

### PRODUCT SPECIFICATIONS

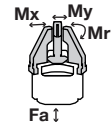


#### Gripping force diagram



#### Forces and moments

Displays static forces and moments that can also have an effect, besides the gripping force.



Mr [Nm]	6
Mx [Nm]	9
My [Nm]	12
Fa [N]	500

### INCLUDED IN DELIVERY



Mounting block

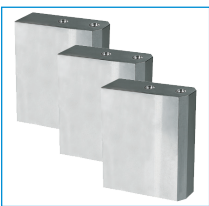
KB3-07



Centering Disc

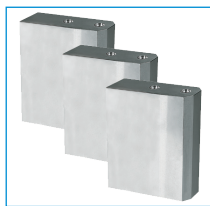
DST40400

### RECOMMENDED ACCESSORIES



Universal Jaw Aluminium

UB303



Universal Jaw Steel

UB303ST



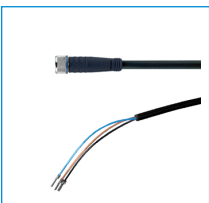
Inductive Proximity Switch  
Cable 0,3 m - Connector  
M8  
NJ3-E2SK



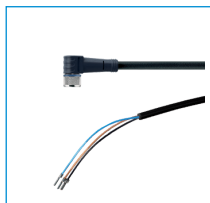
Magnetic field sensor  
Angled Cable 0,3 m -  
Connector M8  
MFS103SKHC



Magnetic field sensor  
Straight Cable 0,3 m -  
Connector M8  
MFS204SKHC



Plug-in connector Straight Ca-  
ble 5m - Socket M8 (female)  
KAG500



Plug-in connector Angled Ca-  
ble 5m - Socket M8 (female)  
KAW500



Straight Fittings - Quick  
Connect Style  
GVM5



Angled Fittings - Quick  
Connect Style  
WVM5

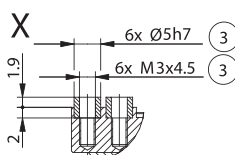
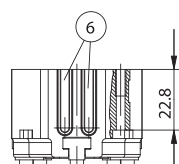
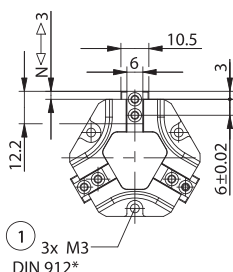
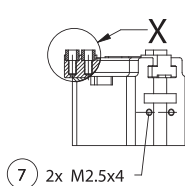
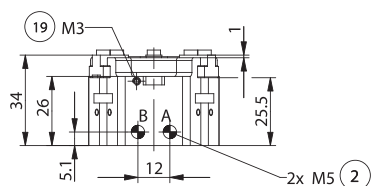
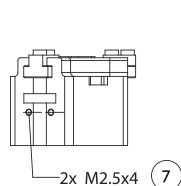
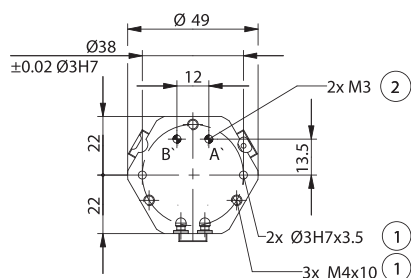


Pressure Safety Valve  
DSV1-8

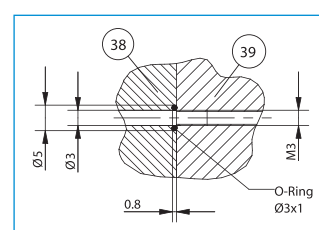
Order no.	Technical Data*		
	GD303N-C	GD303NC-C	GD303NO-C
Stroke per jaw [mm]	3	3	3
Gripping force in closing [N]	200	270	
Gripping force in opening [N]	230		300
Gripping force secured by spring min. [N]		70	70
Closing time [s]	0.02	0.02	0.03
Opening time [s]	0.02	0.03	0.02
Repetition accuracy +/- [mm]	0.05	0.05	0.05
Operating pressure min. [bar]	2	4	4
Operating pressure max. [bar]	8	8	8
Operating temperature min. [°C]	5	5	5
Operating temperature max. [°C]	+80	+80	+80
Air volume per cycle [cm³]	3.5	6.7	6.7
Weight [kg]	0.13	0.16	0.16

\*All data measured at 6 bar

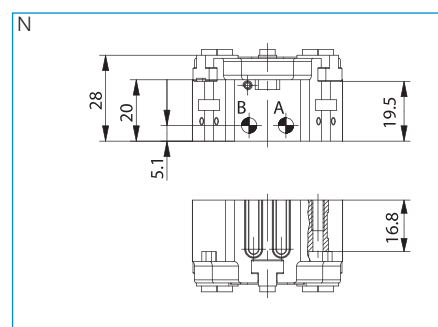
NC / NO



- ① Gripper attachment
- ② Energy supply
- ③ Fixing for gripper finger
- ⑥ Integrated slot for magnetic field sensor
- ⑦ Fixing for mounting block
- ①⑨ Air purge connection option
- ③⑧ Adapter
- ③⑨ Gripper
- Ⓐ Air connection (close)
- Ⓑ Air connection (open)
- Ⓐ Air connection, alternative (close)
- Ⓑ Air connection, alternative (open)



Hoseless air feed-through



# 3-JAW CONCENTRIC GRIPPERS

## SERIES GD300

1

Series GD300 / 3-Jaw Concentric Grippers / pneumatic / Grippers

### ▶ PRODUCT ADVANTAGES



#### “The economical”

##### ▶ Concentration on the essentials

The most economic type of gripping: This is how you reduce your production costs

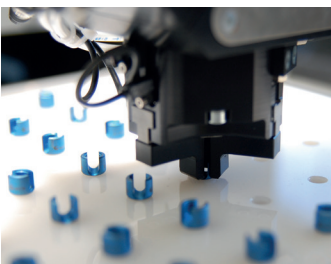
##### ▶ Proven T slot guide

This established and proven guiding technology stands for the highest process reliability like no other

##### ▶ Compact structure

Reduces the interference contours for your application

### ▶ THE BEST PRODUCT FOR YOUR APPLICATION



#### ▶ Our products welcome the challenge!

Extreme conditions, all over the world—our tried and tested components and systems give you endless possibilities.

Find the best product for your specific use:

[www.zimmer-group.de](http://www.zimmer-group.de)

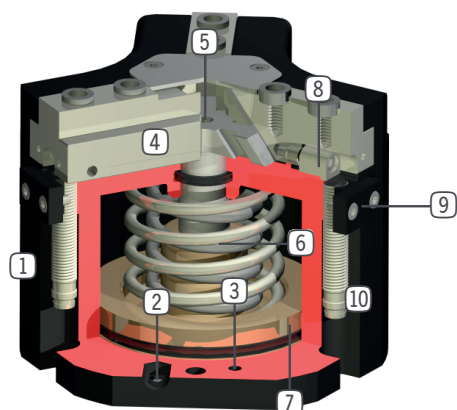
#### HOW TO ORDER CORRECTLY

- ▶ The product order numbers are arranged according to this diagram:

Order no.	GD304	<input type="checkbox"/>	<input type="checkbox"/>	-C
Long stroke		N		
High force		S		
For external gripping, self-locking, spring closing			C	
For internal gripping, self-locking, spring opening			O	



## ► BENEFITS IN DETAIL



- ① **Robust, lightweight housing**  
- Hard-coated aluminum alloy
- ② **Energy supply**  
- possible from several sides
- ③ **Mounting and positioning**  
- mounting possible from several sides for versatile positioning
- ④ **Gripper jaw**  
- individual gripper finger mounting
- ⑤ **Wedge hook mechanism**  
- synchronized the movement of the gripper jaws  
- high force transfer
- ⑥ **Integrated gripping force safety device**  
- spring integrated into cylinder as energy storage
- ⑦ **Position sensing**  
- permanent magnet for direct monitoring of piston movement
- ⑧ **Integrated, adjustable switch cam**  
- for direct position sensing of the gripper jaw
- ⑨ **Mounting block**  
- mounting for inductive proximity switch (10)

## ► SERIES CHARACTERISTICS



Number of installation sizes	9
Stroke per jaw	3 mm - 30 mm
Gripping force	200 N - 34700 N
Weight	0,13 kg - 24 kg
AP class	3



10 million maintenance-free cycles (max.)



High-strength S



Magnetic field sensor



Spring closing C



Inductive sensor



Purged air



Spring opening O



IP40