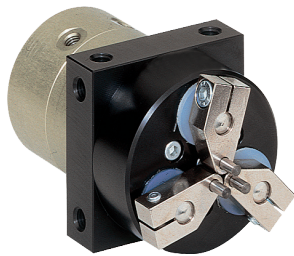


3-JAW CONCENTRIC GRIPPERS

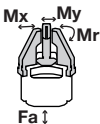
INSTALLATION SIZE GD10

PRODUCT SPECIFICATIONS



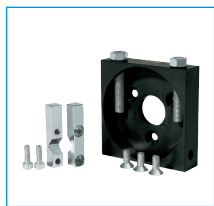
Forces and moments

Displays static forces and moments that can also have an effect, besides the gripping force.



Mr [Nm]	1
Mx [Nm]	1
My [Nm]	0.5
Fa [N]	30

RECOMMENDED ACCESSORIES



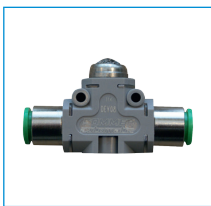
Rotation limiter

DB10



Straight Fittings - Quick Connect Style

GVM5



Quick Exhaust Valve

DEV04



Pressure Safety Valve

DSV1-8

RECOMMENDED ACCESSORY ROTATION LIMITER



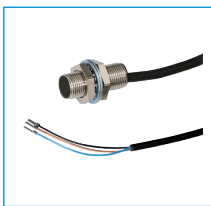
Stop Stroke Adjustment Screws

AI-M8X1-38



Stop Stroke Adjustment Screws

AI-M8X1-53



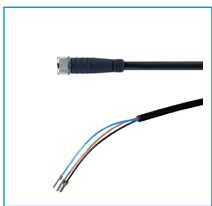
Inductive proximity switch - Cable 5 m

NJ12-E2



Inductive proximity switch - Connector M8

NJ12-E2S



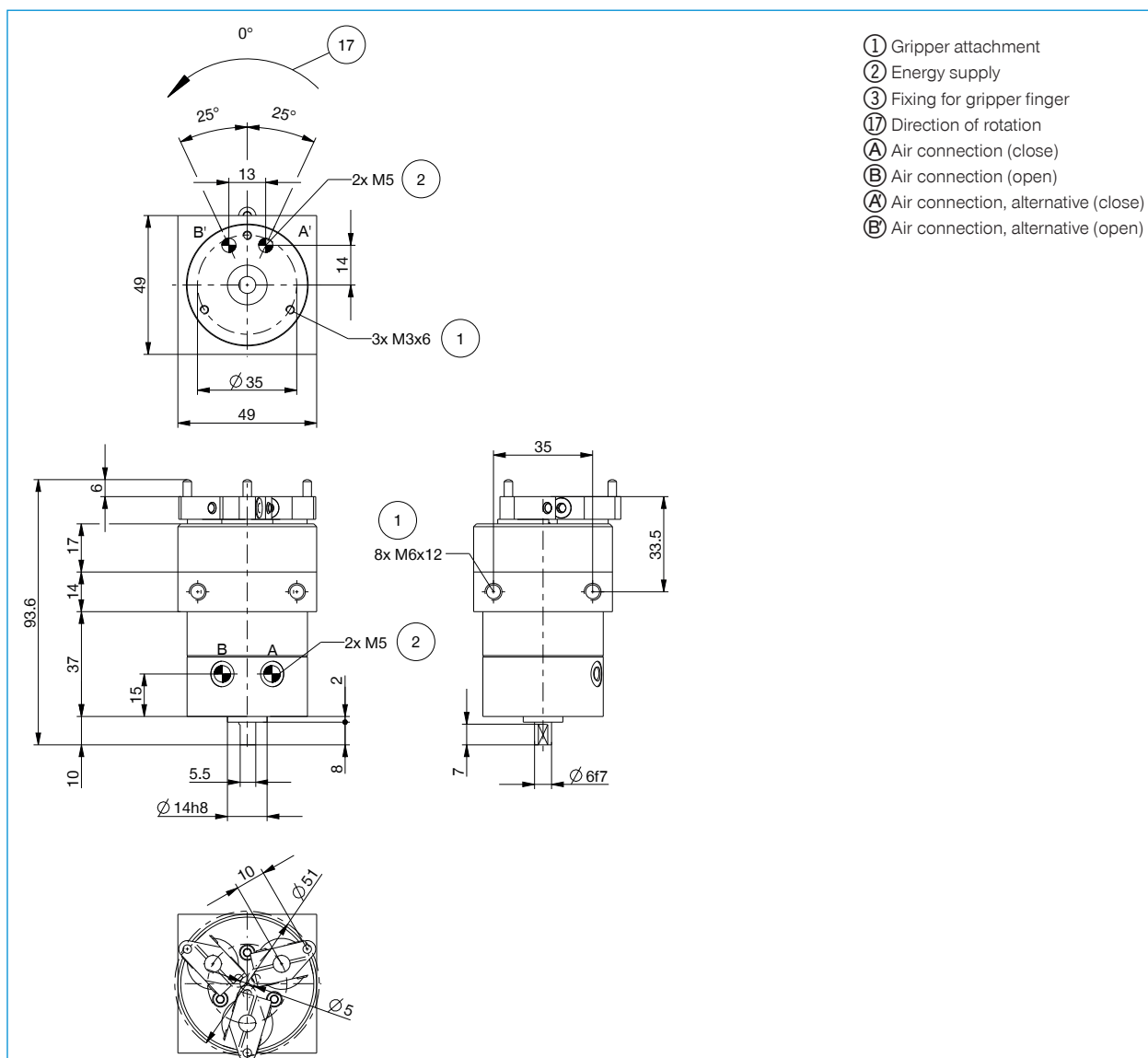
Plug-in connector Straight Cable 5m - Socket M8 (female)

KAG500

► Technical Data*

Order no.	GD10
Stroke per jaw [°]	180
Grip diameter in closing min. [mm]	5
Grip diameter in closing max. [mm]	45
Grip diameter in opening min. [mm]	11
Grip diameter in opening max. [mm]	51
Gripping moment in closing [Nm]	1
Gripping moment in opening [Nm]	1
Closing time [s]	0.07
Opening time [s]	0.07
Repetition accuracy +/- [mm]	0.05
Operating pressure min. [bar]	3
Operating pressure max. [bar]	8
Operating temperature min. [°C]	5
Operating temperature max. [°C]	+60
Air volume per cycle [cm ³]	20
Weight [kg]	0.35

*All data measured at 6 bar

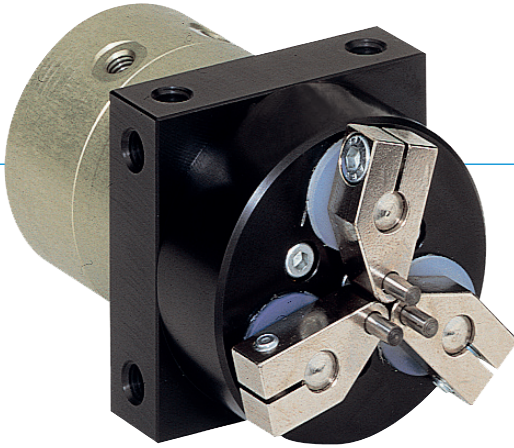


3-JAW CONCENTRIC GRIPPERS

SERIES GD

1

▶ PRODUCT ADVANTAGES



“The flexible”

▶ Largest stroke in small installation space

You can cover numerous application variants with just one gripper type

▶ Gripper jaws included in the delivery

Reduces your design effort, manufacturing costs and setup time

▶ Smooth stroke configuration

Using the optionally available stroke limit, you can customise the stroke to your application, even stroke sensing is possible

▶ THE BEST PRODUCT FOR YOUR APPLICATION



▶ Our products welcome the challenge!

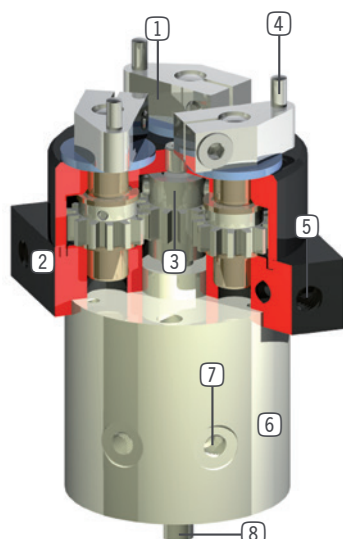
Extreme conditions, all over the world—our tried and tested components and systems give you endless possibilities.

Find the best product for your specific use:

www.zimmer-group.de

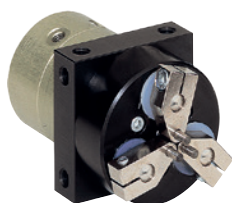


► BENEFITS IN DETAIL



- ① **Gripping movement on rotation**
- for various workpiece diameters
- ② **Robust, lightweight housing**
- Hard-coated aluminum alloy
- ③ **Planetary transmission**
- synchronized the movement of the gripper jaws
- ④ **Standard pins serve as gripper jaw**
- ⑤ **Mounting and positioning**
- mounting possible from several sides for versatile positioning
- ⑥ **Drive**
- double-acting pneumatic cylinder
- ⑦ **Energy supply**
- possible radial and axial
- ⑧ **Shaft projection**
- for accessory assembly e.g. sensors

► SERIES CHARACTERISTICS



Number of installation sizes	3
Stroke per jaw	120° - 180°
Gripping force	24 N - 530 N
Weight	0,08 kg - 2 kg
AP class	2



10 million maintenance-free cycles (max.)



Inductive sensor



IP40