

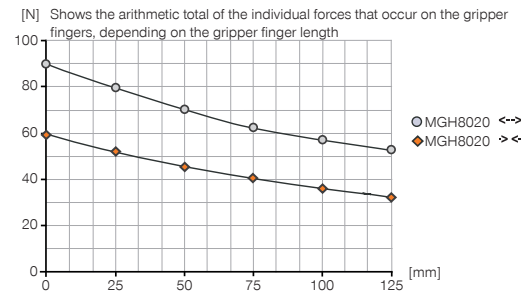
2-JAW PARALLEL GRIPPERS WITH LONG STROKE

INSTALLATION SIZE MGH8020

PRODUCT SPECIFICATIONS

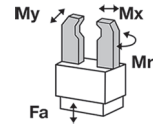


Gripping force diagram



Forces and moments

Displays static forces and moments that can also have an effect, besides the gripping force.



Mr [Nm]	12
Mx [Nm]	12
My [Nm]	8
Fa [N]	260

INCLUDED IN DELIVERY



Centering Disc

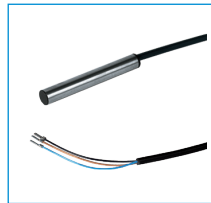
DST40400

RECOMMENDED ACCESSORIES



Attachment Kit for Inductive Proximity Switch

ANS0028



Inductive proximity switch - Cable 5 m

NJ4-E2-01



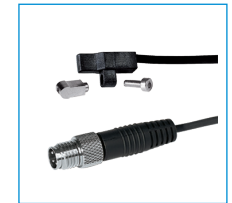
Inductive Proximity Switch Cable 0,3 m - Connector M8

NJ4-E2SK-01



Magnetic field sensor Angled Cable 5 m

MFS103KHC



Magnetic field sensor Angled Cable 0,3 m - Connector M8

MFS103SKHC



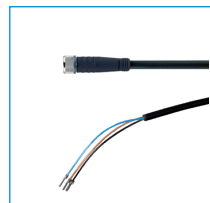
Magnetic field sensor Straight Cable 5 m

MFS204KHC



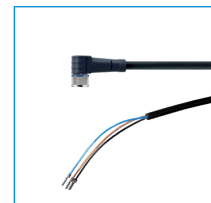
Magnetic field sensor Straight Cable 0,3 m - Connector M8

MFS204SKHC



Plug-in connector Straight Cable 5m - Socket M8 (female)

KAG500



Plug-in connector Angled Cable 5m - Socket M8 (female)

KAW500

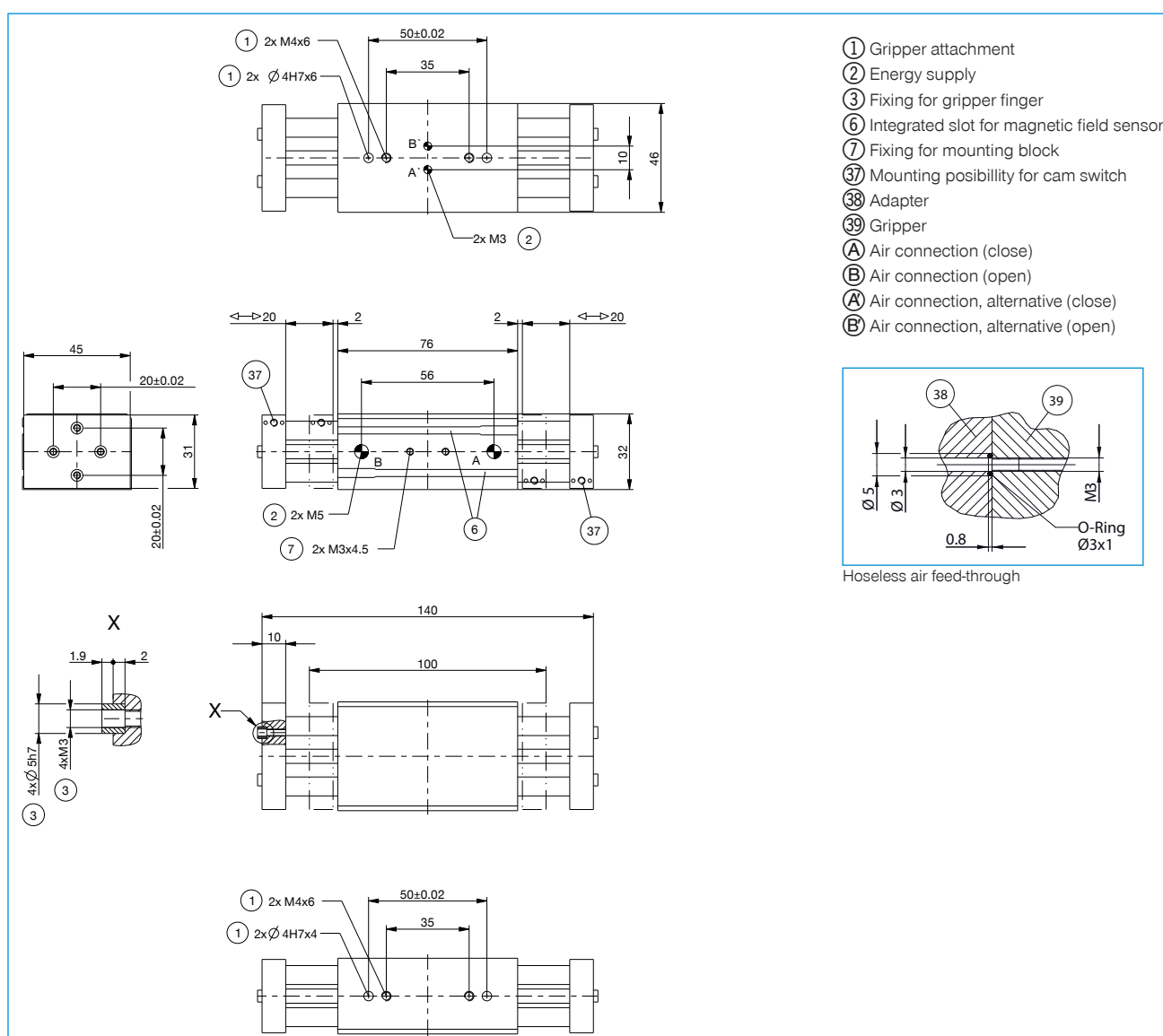


Straight Fittings - Quick Connect Style

GVM5

Order no.	MGH8020
Stroke per jaw [mm]	20
Gripping force in closing [N]	60
Gripping force in opening [N]	90
Closing time [s]	0.09
Opening time [s]	0.05
Repetition accuracy +/- [mm]	0.05
Operating pressure min. [bar]	3
Operating pressure max. [bar]	8
Operating temperature min. [°C]	5
Operating temperature max. [°C]	+80
Air volume per cycle [cm³]	8
Weight [kg]	0.5

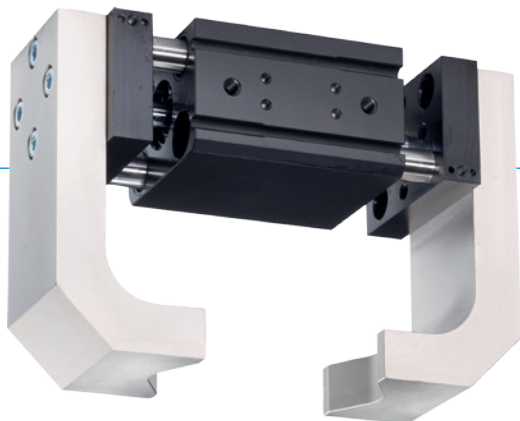
*All data measured at 6 bar



2-JAW PARALLEL GRIPPERS WITH LONG STROKE SERIES MGH8000

1

▶ PRODUCT ADVANTAGES



“The compact”

▶ Reduced interference contours

Low-profile designs and versatile screw connection options enable simple integration into your design

▶ Dirt protection

Using the scrapers on the guides, you can reliably use the gripper even under the harshest conditions

▶ Failure-free continuous operation

Our uncompromising „Made in Germany“ quality guarantees up to 10 million maintenance-free cycles

▶ THE BEST PRODUCT FOR YOUR APPLICATION



▶ Our products welcome the challenge!

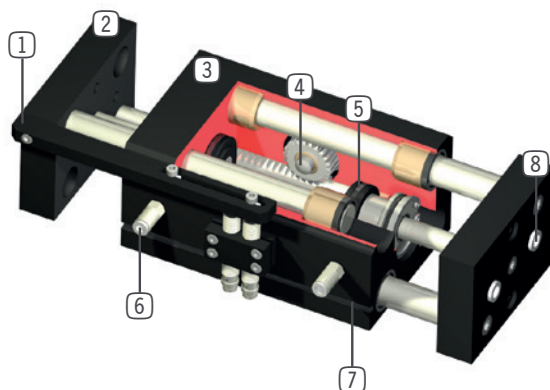
Extreme conditions, all over the world—our tried and tested components and systems give you endless possibilities.

Find the best product for your specific use:

www.zimmer-group.de

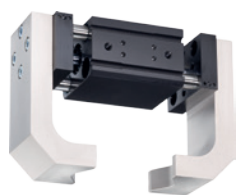


► BENEFITS IN DETAIL



- ① **Attachment kit (cam switch and clamping block)**
- for sensing position by means of proximity switch (optional feature)
- ② **Gripper jaw**
- individual gripper finger mounting
- ③ **Robust, lightweight housing**
- Hard-coated aluminum alloy
- ④ **Synchronization**
- via rack and pinion
- ⑤ **Drive**
- two double-acting pneumatic cylinders
- ⑥ **Energy supply**
- possible from several sides
- ⑦ **Integrated groove**
- mounting and positioning of magnetic field sensors
- ⑧ **Removable centering sleeves**
- quick and economical positioning of the gripper fingers

► SERIES CHARACTERISTICS



Number of installation sizes	3
Stroke per jaw	10 mm - 100 mm
Gripping force	60 N - 910 N
Weight	0,35 kg - 7,3 kg
AP class	2



10 million maintenance-free cycles (max.)



Inductive sensor



IP64



Magnetic field sensor