

O-RING ASSEMBLY GRIPPER, OUTER

INSTALLATION SIZE GS810

▶ PRODUCT SPECIFICATIONS



▶ INCLUDED IN DELIVERY



Centering Disc

DST40600

▶ RECOMMENDED ACCESSORIES



Ejector Jaws Aluminium

UB810-3



Expanding Jaws Steel

UB810-4



Mounting block

KB6.5-02



Inductive proximity switch
- Cable 5 m

NJ8-E2



Inductive proximity switch
- Connector M8

NJ8-E2S



Magnetic field sensor
Angled Cable 5 m

MFS103KHC



Magnetic field sensor Angled
Cable 0,3 m - Connector M8

MFS103SKHC



Plug-in connector Straight Ca-
ble 5 m - Socket M8 (female)

KAG500



Plug-in connector Angled Ca-
ble 5 m - Socket M8 (female)

KAW500

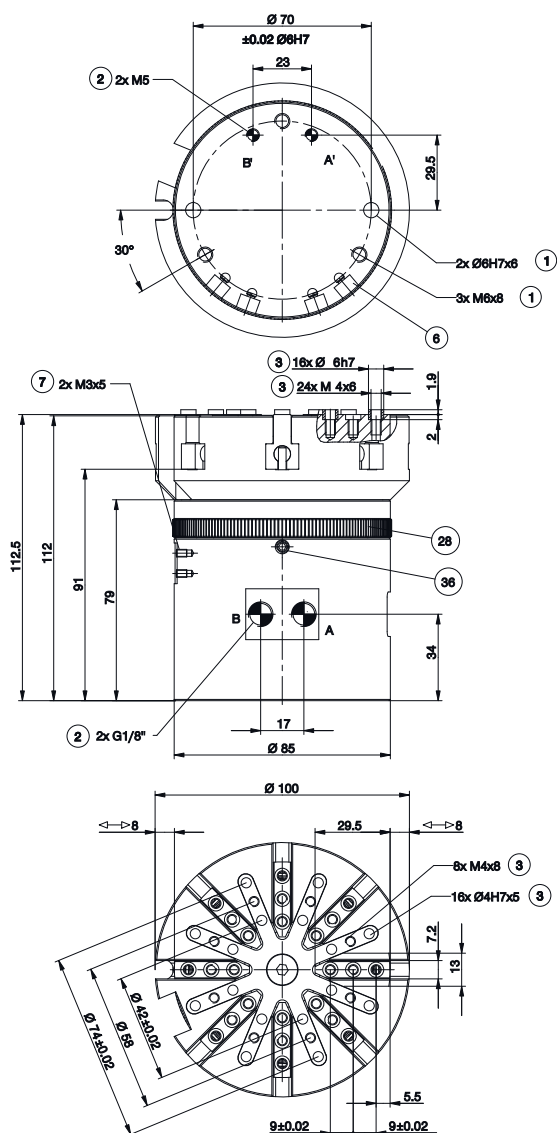


Straight Fittings - Quick
Connect Style

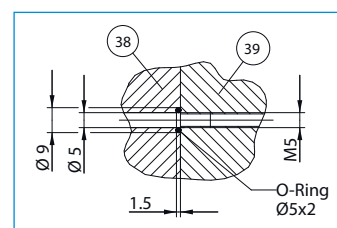
GV1-8X6

Order no.	GS810-B
Opening stroke adjustable per jaw min. [mm]	4
Opening stroke adjustable per jaw max. [mm]	8
Stripping stroke [mm]	10
Opening force [N]	1200
Recommended O-ring diameter min. [mm]	30
Recommended O-ring diameter max. [mm]	120
Number of gripping jaws [Quantity]	8
Closing time [s]	0.05
Opening time [s]	0.05
Repetition accuracy +/- [mm]	0.05
Operating pressure min. [bar]	3
Operating pressure max. [bar]	8
Operating temperature min. [°C]	5
Operating temperature max. [°C]	+80
Weight [kg]	2.5

* All data measured at 6 bar



- ① Gripper attachment
- ② Energy supply
- ③ Fixing for gripper finger
- ⑥ Integrated slot for magnetic field sensor
- ⑦ Fixing for mounting block
- ②⑧ Adjustment ring
- ③⑥ Arrestor for adjustment ring
- ③⑧ Adapter
- ③⑨ Gripper
- ① Air connection (expanding stroke)
- ② Air connection (ejector stroke)
- ③ Air connection alternate (expanding stroke)
- ④ Air connection alternate (ejector stroke)



Hoseless air feed-through

O-RING ASSEMBLY GRIPPER, OUTER SERIES GS

1

▶ PRODUCT ADVANTAGES



▶ Proven technology

We have more than 20 years of proven reliability, which ensures uninterrupted production for you

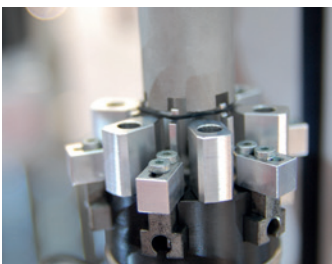
▶ Adjustable expanding stroke

Prevents the O-ring from overexpanding and ensures consistent production quality

▶ Query about magnetic field sensor technology

Detecting the end position allows you to have shorter cycle times and an integrated control system

▶ THE BEST PRODUCT FOR YOUR APPLICATION



▶ Our products welcome the challenge!

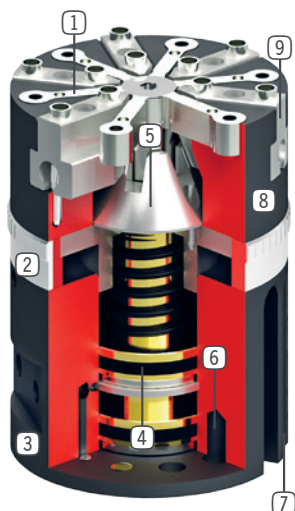
Extreme conditions, all over the world—our tried and tested components and systems give you endless possibilities.

Find the best product for your specific use:

www.zimmer-group.de



► BENEFITS IN DETAIL



- ① **Ejector jaw**
- to shift off the O-ring
- ② **Stroke adjustment**
- for adjustment of the spread stroke
- ③ **Energy supply**
- possible from several sides
- ④ **Drive**
- two single-acting pneumatic cylinders
- ⑤ **Force transfer**
- direct via taper
- ⑥ **Mounting and positioning**
- axial, on the gripper bottom
- ⑦ **Sensing slot**
- mounting and positioning of magnetic field sensors
- ⑧ **Robust, lightweight housing**
- Hard-coated aluminum alloy
- ⑨ **Gripper jaw**
- individual gripper finger mounting

► FURTHER INFORMATION IS AVAILABLE ONLINE



► Technical Information

All information just a click away at: www.zimmer-group.com

Find data, illustrations, 3D models and operating instructions for your installation size using the order number for your desired product.

Quick, clear and always up-to-date.

