

HX-150-G Series

HX-150-G-M

HX-150-G-C



HX-150-G: 50GigE camera with Gpixel GMAX32152

HX-150-G features the Gpixel GMAX32103 CMOS sensor. At full resolution (11276 x 9200), you get 16 frames per second. Its ultra high-speed 50GigE QSFP28 interface offers many benefits including low-cost accessories, low CPU overhead, low latency, low jitter, and accurate multi-camera synchronization using IEEE1588. In addition, 50GigE QSFP28 offers three supported cabling options for cable lengths from 1M to 10KM.

Benefits

- » High-speed 50GigE QSFP28
- » 50x the speed of GigE
- » Ultra high data/frame rates
- » GigE Vision® and GenICam™ compliant
- » Optional IP67 housing

Applications

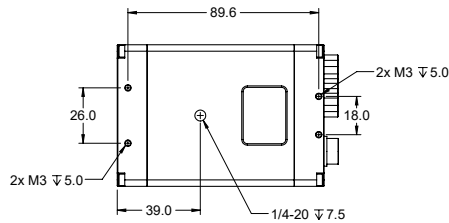
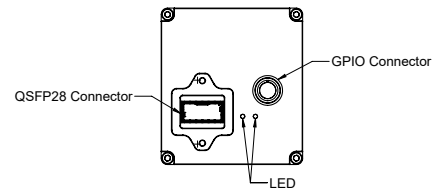
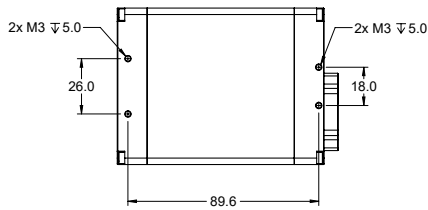
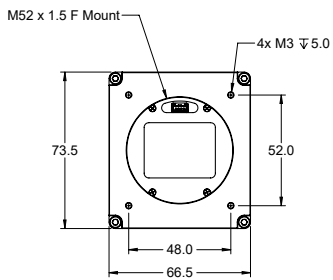
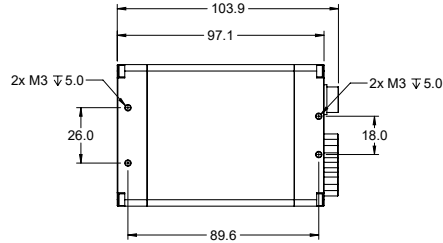
- » Virtual Reality
- » Goal Line Technology
- » Volumetric Capture
- » Motion Capture
- » Immersive 3D Content
- » Finish Line Vision
- » Referee Assist
- » Flat Panel Inspection
- » Machine Vision

Specifications

Sensor	GMAX32152
Resolution	11276 x 9200
Megapixels	152MP
Sensor Type	60.6mm CMOS
Max Frame Rate	16fps @ 8-bit 16fps @ 10-bit
Cell Size	3.2x3.2µm
Standard Mount	M60 Mount, EF/F Mount Available
Shutter	Global
Bit Depth	8 & 10 Bit
GPIO / Triggering	3 in, 3 out Software, External (Pulse or Edge)
Interface	50GigE QSFP28
Exposure/Integration*	1µs – 1s
Dynamic Range	>66db
Monochrome Modes	Mono8, Mono10, Mono10Packed
Raw Modes	BayerGB8, BayerGB10, BayerGB10Packed
Operating System	Win10 (64 bit), Linux (64 bit)
Compliance	CE, FCC, RoHS, WEEE, GigE Vision, GenICam
Power Requirements	18W, 12V
Operating Temperature	0C - 45C
Storage Temperature	-30C to +60C
Dimensions & Weight	97 x 66 x 73 - 750g
Warranty	2 Years

*all minimum exposure specs can vary from what is listed based on the limitations of each sensor as per notice from the manufacturer.

Mechanical drawings



Any Questions?

1-866-780-6082

sales@emergentvisiontec.com

<https://emergentvisiontec.com>