

HR-20000-S Series

HR-20000-S-M Monochrome

HR-20000-S-C Color



GiGE
VISION

GEN<i>CAM

HR-20000-S: 10GigE camera with Sony IMX367

HR-20000-S features the Sony IMX387 CMOS sensor. At full resolution (4416 x 4428), you get up to 43 frames per second. Its ultra high-speed 10GigE SFP+ interface offers many benefits including low-cost accessories, low CPU overhead, low latency, low jitter, and accurate multi-camera synchronization using IEEE1588. In addition, 10GigE SFP+ offers three supported cabling options for cable lengths from 1M to 10KM.

Benefits

- » High-speed 10GigE SFP+
- » 10x the speed of GigE
- » Ultra high data/frame rates
- » GigE Vision® and GenICam™ compliant
- » Optional IP67 housing

Applications

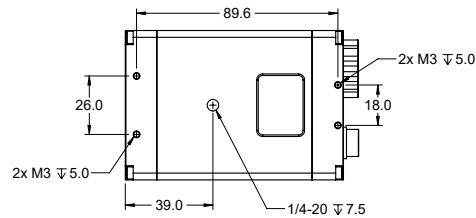
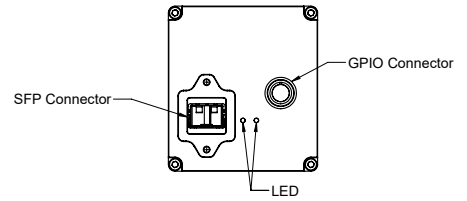
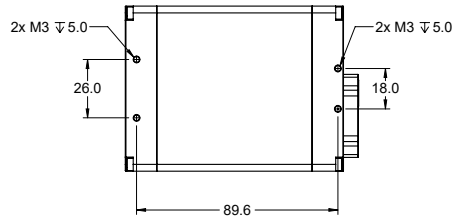
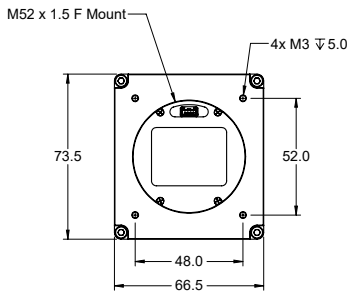
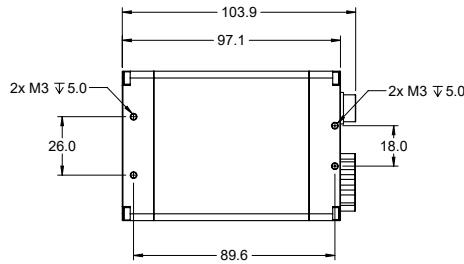
- » Virtual Reality
- » 3D Mapping
- » PCB Inspection
- » Immersive 3D Content
- » Finish Line Vision
- » Referee Assist

Specifications

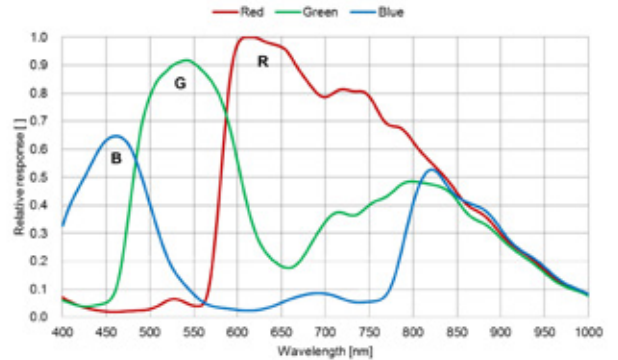
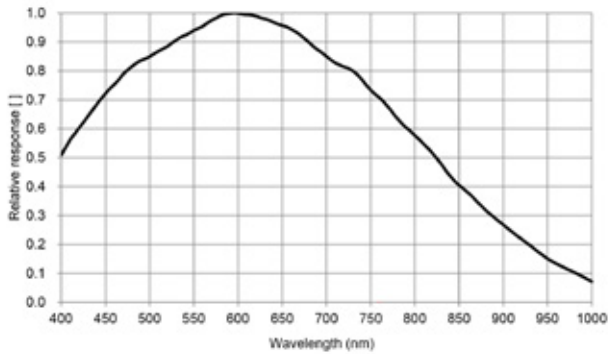
Sensor	IMX367
Resolution	4416 x 4428
Megapixels	19.5MP
Sensor Type	Four Thirds (1:1) - CMOS
Max Frame Rate	43fps @ 8-bit 28fps @ 12-bit
Cell Size	3.45x3.45µm
Standard Mount	52mm, M52x1.5x12mm BFL, F-mount Available
Shutter	Global
Bit Depth	8 & 12 Bit
GPIO / Triggering	3 in, 3 out Software, External (Pulse or Edge)
Interface	10GigE SFP+
Exposure/Integration*	35µs - 1s
Dynamic Range	71 dB
Monochrome Modes	Mono8, Mono12, Mono12Packed
Color Modes	RGB8, BGR8, YUV411, YUV422, YUV444
Raw Modes	BayerRG8, BayerRG12, BayerRG12Packed
Operating System	Win10 (64 bit), Linux (64 bit)
Compliance	CE, FCC, RoHS, WEEE, GigE Vision, GenICam
Power Requirements	8W, 12V
Operating Temperature	0C - 45C
Storage Temperature	-30C to +60C
Dimensions & Weight	97 x 66 x 73 - 600g
Warranty	2 Years

*all minimum exposure specs can vary from what is listed based on the limitations of each sensor as per notice from the manufacturer.

Mechanical drawings



Spectral Sensitivity



Any Questions?

1-866-780-6082

sales@emergentvisiontec.com